



armechsolutions.

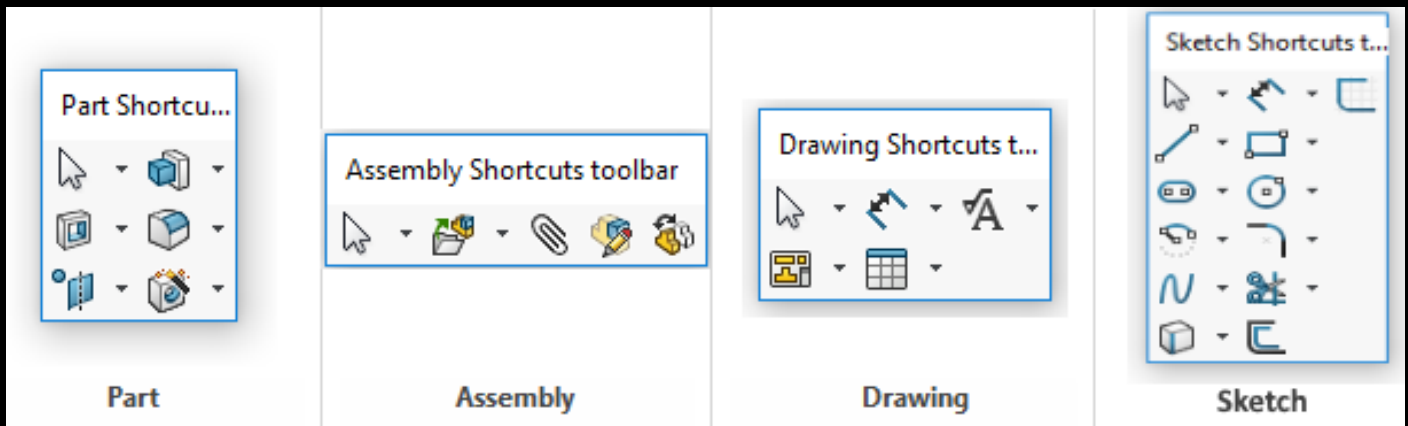
**Solidworks tips that if you
don't already know, you
should**

#7 Hotkeys

armechsolutions.com

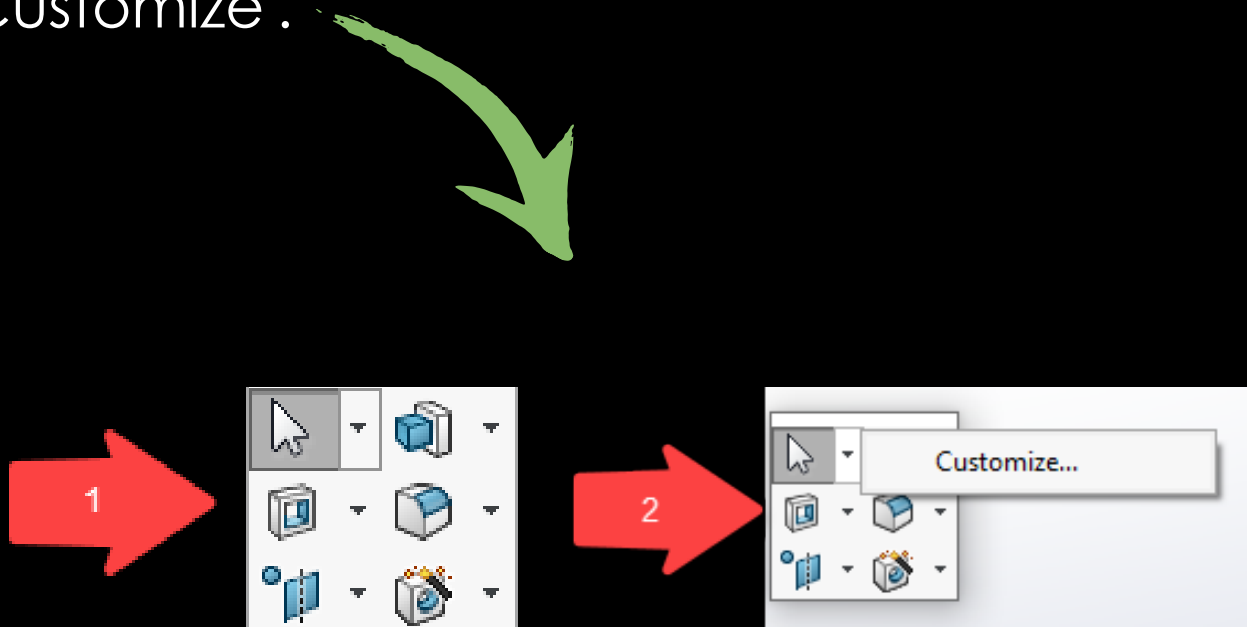
The 'S' Key

The Solidworks 'S' key is a customisable shortcut that displays options to the user that depend on the current mode.

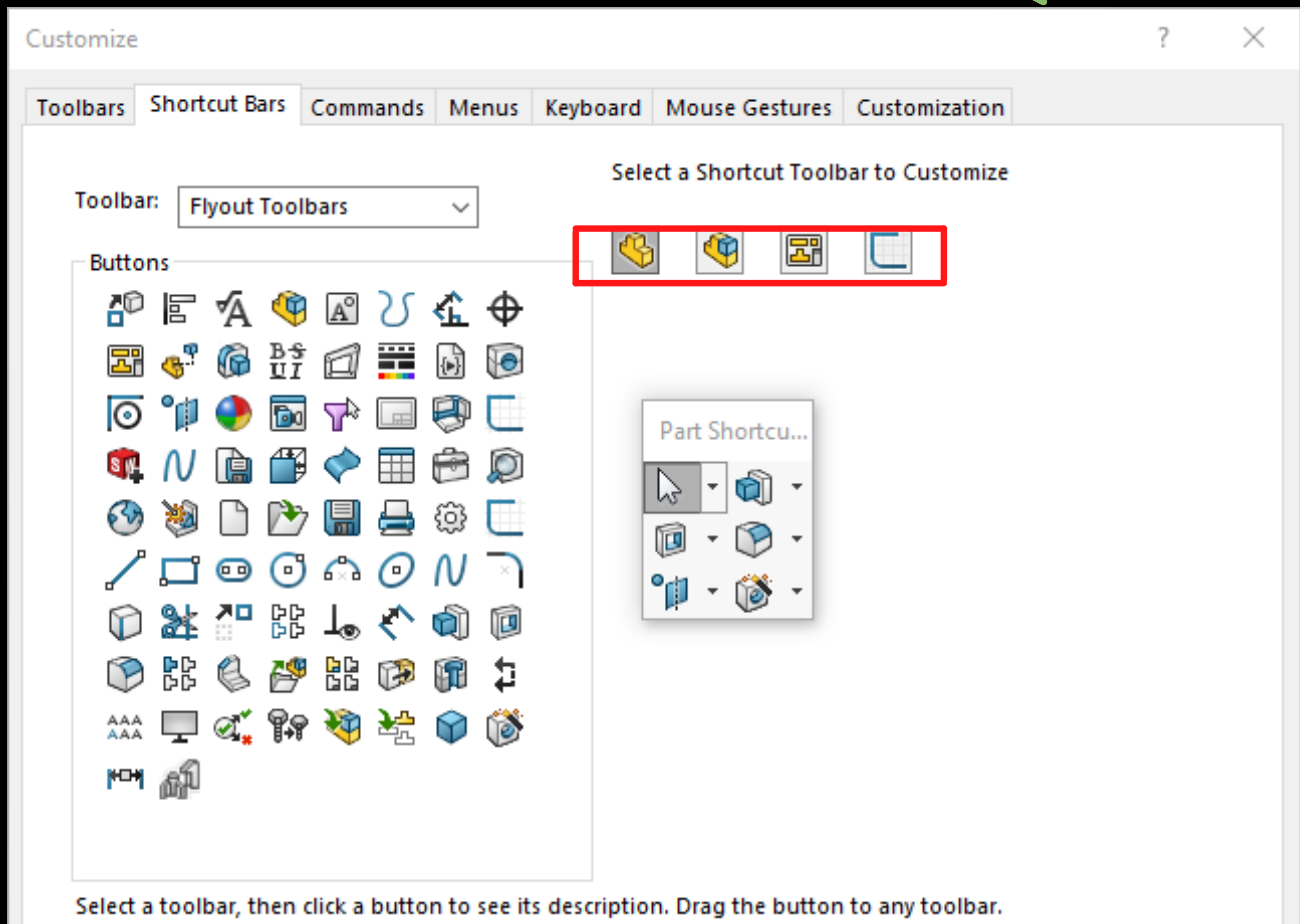


Customise the 'S' key

In your window press the 'S' key, right click on the menu that appears and select 'Customize'.



The following window is displayed. The Part, Assembly, Drawing and Sketch toolbars can be edited and customised.





armechsolutions.

Contact us for a free consultation, and find out how we can help you

MAKE IT HAPPEN



+44 141 221 9205



info@armechsolutions.com

armechsolutions.com